



An awning family **with the best standing.**

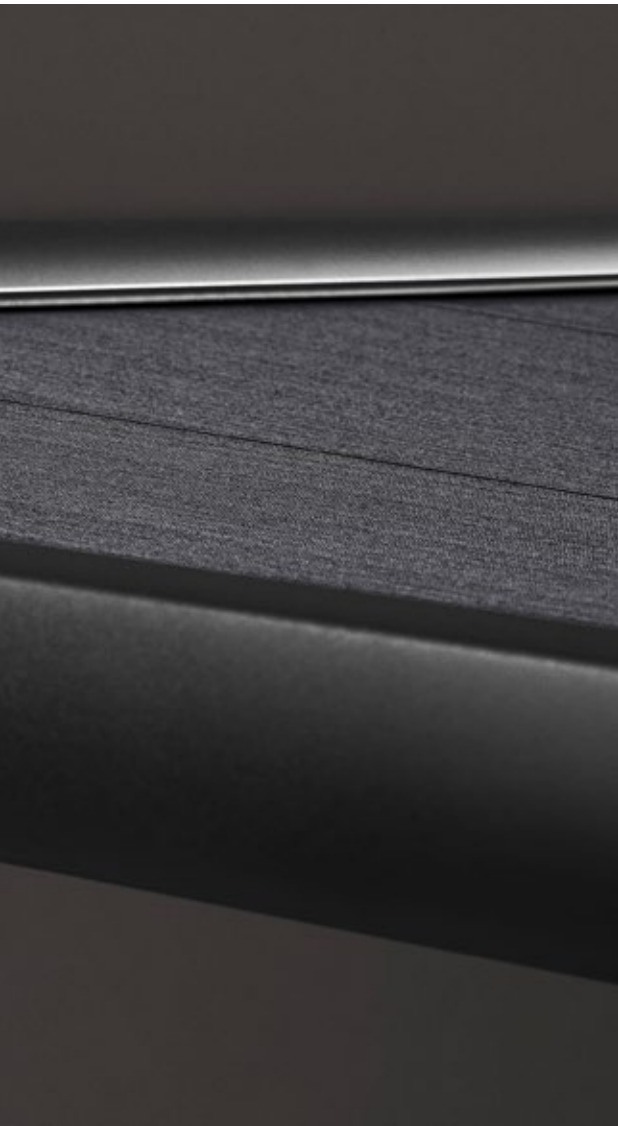
Pergola Awnings for Patio and Balcony

SBI Ltd (Sun Blinds Installations) [www.sbiproducts.co.uk](http://www.sbiproducts.co.uk)

**markilux**  
The best under the sun



The full details  
can be found at [markilux.com](http://markilux.com)



# The sun smiles down on an awning. Life smiles on you under a markilux.

## Outdoor living

Hours of relaxation and recuperation or valuable time well spent with your family and friends – these are the precious moments in which you cherish your outdoor lifestyle. Designer awnings from markilux not only provide shade, they open up new opportunities for enjoying life. They provide protection on hot days and make for a cosy ambience long after the sun has set. In choosing a markilux designer awning, you are opting for the very best quality “Made in Germany” – and for endless hours of light-hearted fun outdoors.

markilux designer awnings have received a multitude of awards:



| Brand

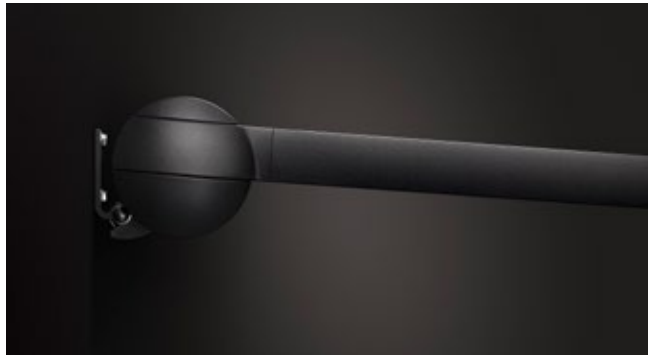


| z.B. markilux pergola stretch

# Reduced to the essence: Free. Time.

## Premium quality made in Germany.

For over 50 years, markilux has been developing and manufacturing top-quality solar protection solutions. markilux designer awnings are characterised by their first-rate, multi-award-winning design and innovative technology. The production of awning and cover under one roof is the essence of what markilux “Made in Germany” represents, with the aim of making an al fresco lifestyle comfortable, convenient and enjoyable. With markilux, you can turn your favourite spot outdoors into something extra special. **The best under the sun. Create the most alluring shade in the world.**



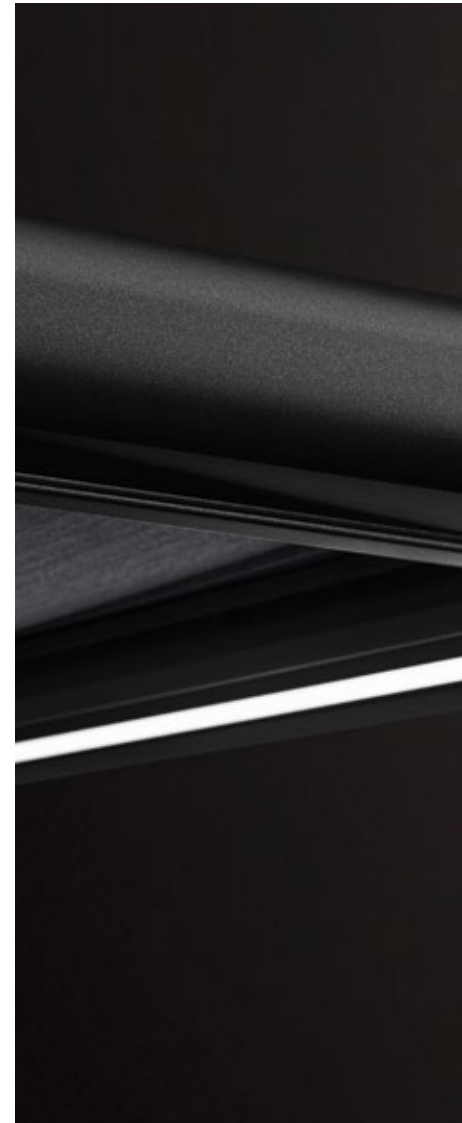
### markilux quality

The best possible materials and a comprehensive quality management system ensure that every markilux designer awning has a long service life. As a company, markilux is certified in accordance with EN ISO 9001 standards.



### markilux functionality

markilux combines innovative technologies and smart solutions to create high-end products. A multitude of accessories and operating options make it possible to individualise your markilux designer awning in line with your own personal wishes.





markilux

**markilux service**

The combination of a brand product, expert advice and professional installation makes your solution perfect. Qualified markilux specialist dealers provide a comprehensive service and a personal point of contact in your area.

Member of  **Rat für Formgebung**  
German Design Council



**markilux design**

It is the perfect combination of form and function that turns an awning into a markilux designer awning. In this respect, markilux relies on its long-standing experience in R&D and design.

# A perfect outlook. Everything in view.

## markilux pergola awnings

Every single member of the pergola family makes an excellent impression by virtue of its excellent level of quality and comfort. The multi-award-winning pergola awnings transform outdoor areas into uniquely favourite places and whet the appetite for the new “Al Fresco Experience”.



**mx** \_ pergola classic  
The pergola with a round cassette  
casts its shade over a wide area.





**MX**\_pergola cubic

The pergola awning with square cassette offers space for large-format solar protection.

page 12



**MX**\_pergola compact

The compact, slender pergola awning with square cassette is ideal for smaller patios.


page 14



**MX**\_pergola stretch

The cover is perfectly integrated into the minimalist design of this high-value pergola awning. The rhythmical and space-saving cover folding technology enables large areas to be shaded.

page 18

The background is a dark, almost black, abstract composition. A prominent diagonal line runs from the top right towards the bottom left, creating a sense of depth and movement. In the upper left quadrant, there is a small, bright light source that casts a soft, circular glow and creates a subtle lens flare effect. The overall aesthetic is minimalist and modern.

Pergola Performance.  
With all the trimmings.



markilux



Pergola Awnings

### Pergola awning

max. 600 × 450 cm

max. 500 × 600 cm

### Options

Shadeplus,  
lateral wind protection and  
extra privacy as well as a  
broad range of convenience  
and design options,  
page 16



### markilux shadeplus

The additional vertical blind integrated into the front profile simply blocks out low-lying sun and the glances of inquisitive neighbours.

### Coupled pergolas

For all those who want even more shade: up to five single pergola units can be joined side by side.

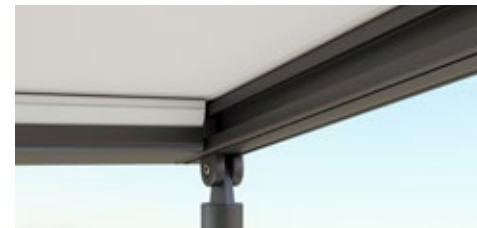
For all those, who have grandiose plans even if it is windy and wet.

**markilux pergola classic**

When it comes to solar and wet weather protection, the markilux pergola classic ranks top. The awning system on slender posts and with lateral guide tracks provides generous shading with an extension of up to 6 metres. At the same time, the markilux pergola defies wind and weather up to Beaufort 6 (wind resistance class 3). You have every opportunity to make your favourite outdoor place your very own with a markilux shadeplus as well as with a multitude of lighting options and different post shapes. No matter how strong the sun shines or the wind blows, with your markilux pergola classic you can enjoy life outdoors at any time.



**Closed full cassette system**  
The cover disappears completely inside the round cassette, Ø 187 mm, and is ideally protected. The only thing that is more impressive than the look itself is the fact that the technology functions perfectly.



**markilux tracfix**  
One of many markilux refinements: the lateral cover guidance system that leaves no gap between the cover and the guide track. Gives an overall better appearance and improves wind stability.



**Pergola awning**

max. 600 × 450 cm

max. 500 × 600 cm

**Options**

Shadeplus,  
lateral wind protection and  
extra privacy as well as a  
broad range of convenience  
and design options,  
page 16



**Wonderful, functional and reliable**

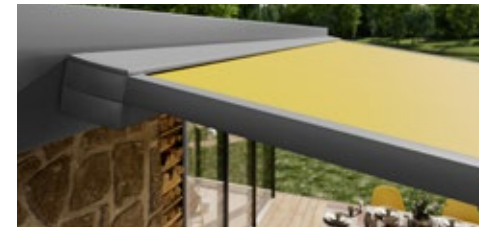
Regardless of whatever style you prefer – in the personal combination of awning cover and technology you are bound to find precisely the markilux pergola cubic that fulfils your requirements perfectly.



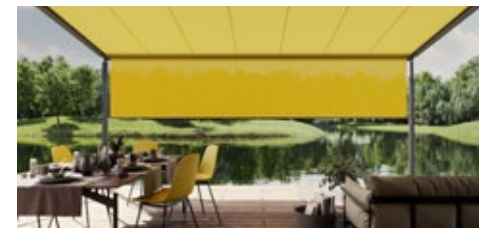
# Essentially square. Practically superb.

## markilux pergola cubic

The design of the new markilux pergola cubic was developed entirely in the spirit of the Dessau Bauhaus philosophy. Functional, clear and timeless contouring on the basis of cubist simplification. In addition to the proven solar protection benefits offered by the pergola, this model integrates itself harmoniously and impressively into today's modern architecture and does not just make a big impression with its high-quality workmanship.



**Reduced design language**  
The angular cassette, 200 × 160 mm, offers room for large-scale solar protection up to 600 × 450 cm or 500 × 600 cm, and as coupled unit a whole lot more.



**markilux shadeplus**  
More shade and protection – even when the sun is low in the sky. Optionally solar driven using the markilux sundrive.

## The pinnacle of quality and convenience

Extras for more shade, light and warmth – discover all the ways you can personalise your awning in the showroom of your markilux specialist dealer and at [markilux.com](https://www.markilux.com)



**markilux shadeplus**

Blocks out glare from the sun  
and prying eyes in an instant.



**An “all-round” achievement**

The square, compact cassette, 125 x 125 mm,  
protects the awning cover all round.





# mx\_pergola compact

## Dependable. Anywhere. For anyone.

### markilux pergola compact

The pergola compact unites the graceful shape of the classic pergola with the latest in product design and the most advanced technology. The compact, space-saving awning system on slender support posts and with lateral guide tracks, which always keep the cover taut, is ideal for smaller patios. The markilux pergola compact invites you to lounge and take it easy. Attractive and functional solar protection. Anywhere. For anyone.



**Pergola awning**  
max. 450 × 400 cm

#### Options

Shadeplus, lateral wind protection and extra privacy as well as a broad range of convenience and design options, page 16



reddot design award  
winner 2017

#### Always in the best light

Highlighted with LED Spots attached to the cassette or LED Line in the cassette, on the guide tracks and / or in the light bar guarantee endless hours of pleasure outdoors – even long after the sun has set.



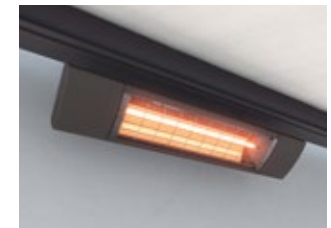
**markilux shadeplus**

The vertical protection against sun and prying eyes – up to 230 cm in height – creates a private room outdoors with its own special ambience.



**markilux sundrive**

An integrated solar module can drive the shadeplus motor in the markilux pergola classic / cubic. When the awning is extended, the front profile and the guide tracks finish perfectly flush with one another.



**markilux infrared heater**

Feel the warmth in an instant and enjoy the evening outside for even longer. The infrared halogen lamp stands for direct warmth without a heating-up phase and a pleasant colour temperature. Either as a stand-alone unit (1400 Watt) or installed under your awning (2500 Watt, the latter optionally dimmable in three stages). Always in a top-quality aluminium housing and powder coated in the markilux awning colour.



MX\_pergola classic | MX\_pergola cubic | MX\_pergola compact **Options**



**Coupled awnings**

Depending on the model, up to three awnings can be joined together offering even more shade.



**Telescopic post**

For better water drainage, the front post of the markilux pergola can be lowered in a flash between 20 and 40 cm depending on the size. On request operated by motor.



**LED Line**

Light for reading or informal get-togethers, either in the guide tracks and/or in the lighting bar, turns your night into day. Also available in the cassette with the pergola cubic/compact.



**Square posts**

As an alternative to round posts, square ones fulfil the desire for clean straight lines.



**Ballast boxes**

Give your markilux pergola reliable stability when fitting the front posts to foundations is not possible or desired.



**Stainless steel crank**

Bring the adjustable posts to the desired height in no time at all. Optionally operated by motor.



**LED Spots attached to the light bar**

The spotlights provide perfect contrast lighting in the evening hours. And they can be pivoted and dimmed, of course! Also available under the cassette in the pergola cubic/compact.



#### Slender appearance

Design reduced to the essence.  
The cover safely tucked away.



#### Well thought through

Water drainage from the cover via the  
integral gutter and support posts is assured  
from a very low pitch of only 5°.



#### Attractive protection majestically full of fresh air

A waterproof awning cover leaves you perfectly prepared for a comfortable and relaxed  
season – al fresco. Allow your markilux specialist dealer to give you professional advice.

# mx\_pergola stretch



## Many. Fold. Superbly in shape.

### markilux pergola stretch

The markilux pergola stretch offers an impressive take on sun and wet weather protection. The cover is perfectly integrated into the minimalistic, high value awning system. The rhythmical, space-saving cover folding technology makes it possible to shade large areas and creates a special and impressive atmosphere. The abundance of optional extras means that the markilux pergola stretch invariably shows itself from its most attractive side.



**Pergola awning**  
max. 700 × 700 cm

### Options

LED Line in the cover support profiles,  
cross-beam with heaters and / or LED lighting,  
vertical cassette roller blinds,  
lateral wind protection and privacy screen  
as well as many more comfort and design options



### Truly imposing with an impressive appearance

Versatile implementation in varying weather conditions. The LED lighting, heaters and lateral protection options allow the atmosphere to be adapted as the situation requires.





A clear overview.  
Opening up  
exciting prospects.



References



## Bootshaus KUL Gastro GmbH Mannheim | DE

The restaurant terrace: a highlight whatever the weather. With the pergola stretch, the spacious terrace with a view of the Neckar invites you to linger and celebrate.







Neuenahrer Brauhaus  
Bad Neuenahr | DE  
Beauty lies not in size,  
but in attention to detail.

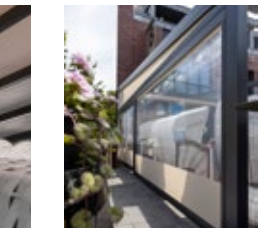




LandHotel Kolb  
Haus im Ennstal | AT  
The markilux syncra with  
four pergola awnings blends  
in perfectly with the natural  
environment.







**Dorf 8 Sankt Peter-Ording | DE**  
The markilux pergola stretch as a coupled unit offers plenty of space for numerous guests.

**Anstetten | AT**  
No fuss. No frills.  
But big and stable even in wind.





markilux



**Sulz am Neckar | DE**

A place to live life to the full.  
For enjoying. For chatting.  
For relaxing.







**Strandbar 54° Nord**  
**St. Peter-Ording | DE**

A new dimensional space for your customers.  
Turns visitors into regulars.





**St. Lorenzen | AT**  
Cleverly combined.  
Sun protection requested  
and striking eye-catcher.



**Weingut Strauss  
Gamlitz | AT**  
Welcoming. Inviting. Free.  
More feel-good experience.  
More customers.  
More turnover.







Graz | AT  
Stylish shading. Perfectly configured to suit both the architecture and the customer's requirements.



markilux

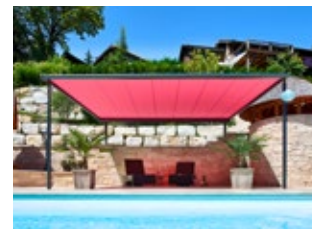


Ron Blaauw's Gastro Bar  
Amsterdam | NL  
The outside redefined:  
an al fresco dining landscape  
with a lot of turnover potential.





Schäftlarn | DE  
Good prospects:  
more space in a prime location.







**Sant Pere de Ribes | ESP**  
Time to be outdoors.  
All year round.



**Waddinxveen | NL**  
An atmosphere of relaxation  
as far as the eye can see.







Het Badpaviljoen Domburg | NL  
The sun smiles down on an awning.  
Life smiles on you under a markilux.





Berggasthof Mitterberg

Zell am See | AT


More space and sunny prospects, too:  
both for your guests – and your turnover.







Küstenperle  
Büsum | DE  
Large-area shading with eye-catching  
advertising motifs on the covers.

The background is a dark, textured surface, possibly a book cover or a piece of fabric. A diagonal line runs from the bottom left towards the top right. In the bottom right corner, there is a curved, metallic-looking object, possibly a hinge or a part of a device.

Beauty lies not in size,  
but in attention to detail.



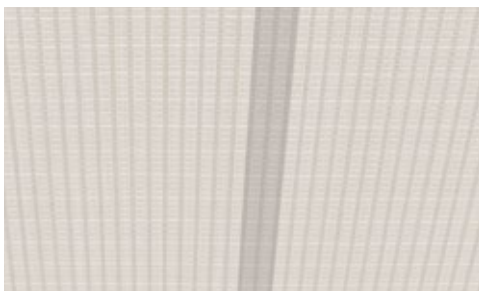


Awning Cover Fabrics, Awning Colours,  
Operation and Technical Specification



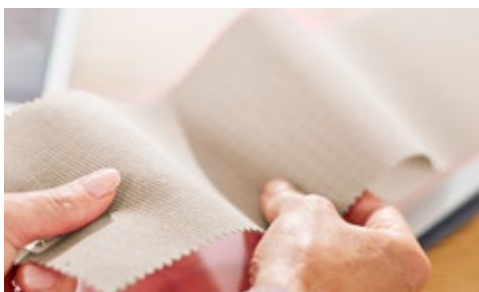
#### **Self-cleaning effect**

Water droplets pick up dirt particles and run off the awning cover taking the dirt with them (the awning must be set at a pitch of at least 14 degrees), ensuring you can enjoy your beautiful fabric for a long time to come.



#### **Bonded awning covers**

Panel joints bonded together ultrasonically ensure a consistent, unobtrusive appearance. Their excellent resistance to water, light and fluctuations in temperature ensures that the service life of the cover is extended substantially.



#### **Light and weather resistance and resistance to fading**

High-tech yarns dyed right to the core and the high-grade snc finish developed in house guarantee the most stunning shade in which to relax.



Detailed information about the typical properties of awning fabrics is available from your markilux specialist dealer and in the current markilux awning fabric brochure.



#### **markilux collection one – One collection, endless ideas**

Choose your own favourite pattern from a number of different colour families. When making your selection allow yourself to be inspired, enthused and advised by a markilux specialist dealer near you ...





## The most beautiful fabric between heaven and earth.

### The markilux cover fabric collection

The colour and quality of the awning fabric are what help make the ambience on your patio something special. Colour nuances, patterns and textures succeed in creating that uniquely special effect by virtue of their brightness and hue. As a leading manufacturer of high-grade awning fabrics with 50 years of experience in the manufacture of textiles, markilux offers an unparalleled variety. The markilux textile design team is constantly developing new patterns in line with the latest trends, which are nevertheless characterised by their timeless appeal. Among the more than 200 patterns in thematically coordinated colour families, you are bound to find your very own and most beautiful fabric between heaven and earth.



Art. Full.  
Visual highlights for your patio.  
Works of art, in fact.



Traffic white

RAL 9016



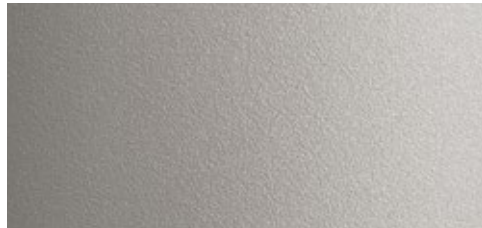
Off-white textured finish

5233



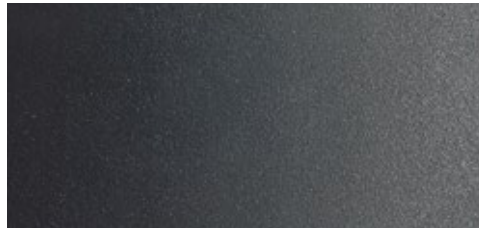
Metallic aluminium

RAL 9006



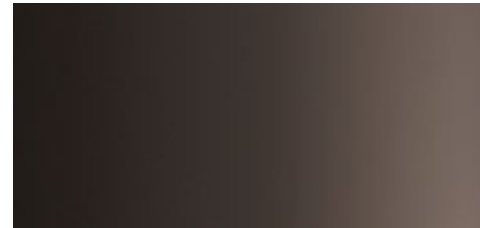
Stone grey metallic

5215



Anthracite metallic

5204



Grey brown

similar to RAL 8019



Havana brown textured finish

5229



RAL colour of your choice

© RAL Bönn 2023







Sounds perfect.  
Looks better.  
**Tone in tone.**

**markilux awning colours**

The awning frame colour complements and enhances the colour of the fabric and creates a perfect link to the architectural surroundings. From a variety of shades of white through to the timelessly elegant anthracite, a broad range of colours is available to you. And if you want to create your own particular colour scheme? No problem! We will gladly manufacture your dream awning in your own personal shade.

Our high-grade powder coating finish is guaranteed for any awning colour you choose.

**Matching every architectural style and customer demand**

All markilux frame colours are available without surcharge.  
Non-standard colours can be selected on request.

## markilux Pergola Awnings

### pergola classic

Page 10



### pergola cubic

Page 12



### pergola compact

Page 14



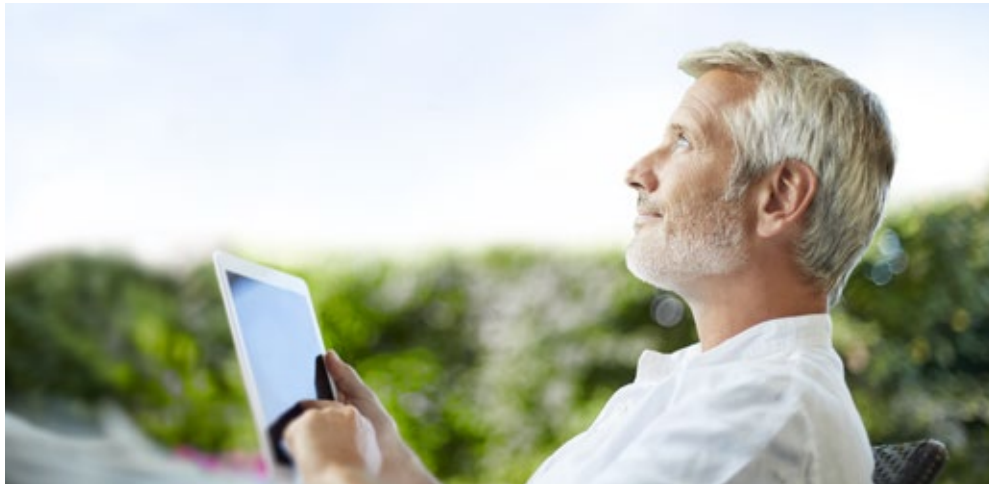
### pergola stretch

Page 18



<b>Max. width × extension</b>	<b>600 × 450 cm</b>	<b>600 × 450 cm</b>	<b>450 × 400 cm</b>	<b>700 × 700 cm</b>
Optional	500 × 600 cm	500 × 600 cm		
<b>Type of awning</b>	<b>Pergola awning</b>	<b>Pergola awning</b>	<b>Pergola awning</b>	<b>Pergola awning</b>
	tracfix cover guidance via lateral guide tracks supported by slim posts	tracfix cover guidance via lateral guide tracks supported by slim posts	tracfix cover guidance via lateral guide tracks supported by slim posts	Cover folds away via track-guided supporting profiles
<b>Operation</b>	<b>Hard-wired motor</b>	<b>Hard-wired motor</b>	<b>Hard-wired motor</b>	<b>Radio-controlled motor*</b>
Optional	+ silentec motor + Radio-controlled motor*	+ silentec motor + Radio-controlled motor*	+ Radio-controlled motor*	
<b>Fixture type</b>	<b>Face / top / eaves</b>	<b>Face / top / eaves</b>	<b>Face / top / eaves</b>	<b>Face / top / eaves</b>
	+ Wall sealing profile	+ Wall sealing profile	+ Wall sealing profile	Includes wall sealing profile and system coverboard
<b>Options**</b>	+ LED Line / LED Spots + Shadeplus + Wind / privacy protection + Posts round / square + Telescopic posts + Ballast boxes + Coupled awning	+ LED Line / LED Spots + Shadeplus + Wind / privacy protection + Posts round / square + Telescopic posts + Ballast boxes + Coupled awning	+ LED Line / LED Spots + Shadeplus (manual) + Wind / privacy protection + Posts round / square + Telescopic posts + Ballast boxes	+ LED Line / LED Spots + Vertical roller blinds + Wind / privacy protection + Cross-beam with heaters and LED lighting + Coupled awning + Panorama window





Smart control



Light sensor



Rain sensor



Light and wind sensor



markilux remote control



silentec motor

## Awning Configurator



### Create the most alluring shade in the world

Configure your markilux designer awning including cover and optional accessories at [markilux.com](http://markilux.com) or visualise your dream awning live on the wall of your own home using the free markilux AR App. Your markilux specialist dealer will advise you personally on site, will draw up an offer tailored to your requirements and install the product professionally.



The awning configurator  
at [markilux.com](http://markilux.com)



markilux 3D App  
Free in your App Store



The best under the sun. Create the most alluring shade in the world.

Innovative technology and the pinnacle of quality, have received both acclaim and multiple awards. Made in Germany. Ideas, detailed information, professional advice and all the exquisite markilux awning fabric patterns can be found in your specialist dealer's showroom and at [markilux.com](http://markilux.com)

SBI Ltd

(Sun Blinds Installations)

Call 0800 0742 721

[sbi.install@btinternet.com](mailto:sbi.install@btinternet.com)

[www.sbiproducts.co.uk](http://www.sbiproducts.co.uk)

Supply and installation

Service • Cleaning • Repairs

Established in 1998

Full members of the BBSA

British Blinds & Shutters  
Association



[markilux.com](http://markilux.com)



**markilux**

The best under the sun